



# Roof Support System for Aluminum & Galvalume Awnings

## Assembly and Installation

### Instructions

Read the instructions before starting the job. They explain the steps required to produce a finished product that will meet factory specifications.  
**All references to "Left" and "Right" are while facing the home.**



Check the material received.  
 Match your shipment with the Bill of Materials.  
 If there is a shortage or wrong material,  
 call Dealer Service immediately.

Safety is important!  
 Wear Safety Glasses and Work Gloves.  
 Follow all safety practices while assembling  
 and installing this product.

**Dura-Bilt Products, Inc. P.O. Box 188 Wellsburg, N.Y. 14894**

***Dealer Service 570-596-2000 E-Mail [info@durabilt.com](mailto:info@durabilt.com)***

**DURA-BILT RESERVES THE RIGHT TO CHANGE DESIGN AND/OR SPECIFICATIONS WITHOUT NOTICE.**

# Installation Instructions

1. The Roof Support System will be installed after the Awning is completed.
2. The Deluxe Front Header for the Roof Support System will be laid out and assembled on the ground. If the Roof is longer than 10'; Deluxe Front Header Joiner will be used to fasten the sections of Deluxe Front Header together for proper length.

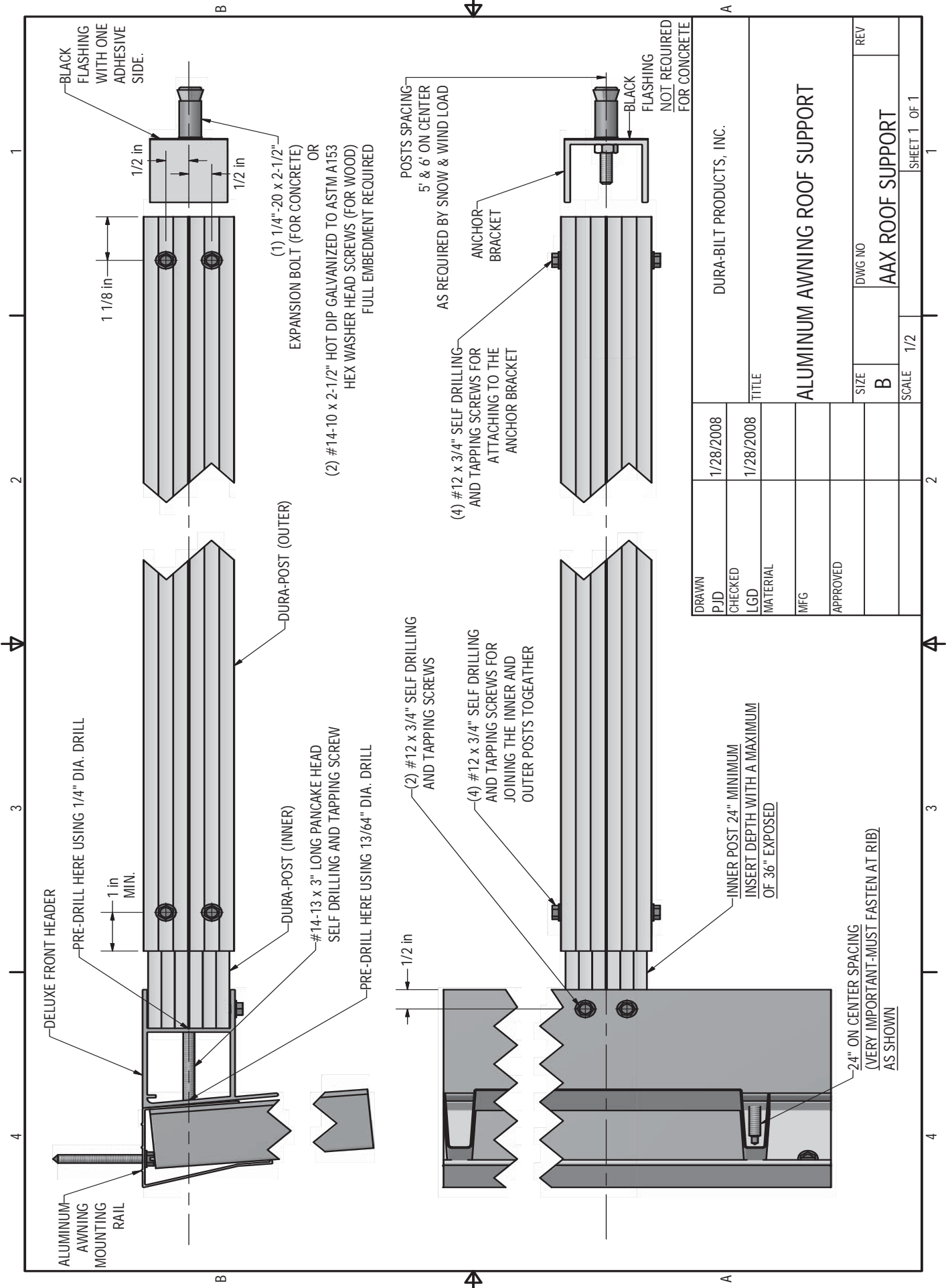
**Note: You should pay close attention to the location of Doors and Windows and where you will be fastening the Deluxe Front Header to the Mounting Rail. The #14-13 x 3" Long Pancake Head Screw MUST be fastened at the ribs. If there is Dura-Beam Bracing, it will also have to be predrilled with the 13/64" Dia. Drill. As shown in drawing.**

3. Attach the Deluxe Front Header to the Mounting Rail using one (1) #14-13 x 3" Long Pancake Head Screw with 24" On Center Spacing as shown in the drawing.
4. Locate and mark the location of the posts and attach the Inner Post to the Deluxe Front Header using two (2) #12 x 3/4" Self Drilling and Tapping Screws.
5. Plumb the Outer Post and mark the location for installing the Anchor Bracket.

**Note: If you are installing Columns on a Pressure Treated Lumber Deck. With your order you will receive a 4" x 4-1/2" piece of Black Flashing with paper coated adhesive on one side for each Dura-Post. Peel the paper off from the Flashing and stick the flashing to the bottom of the Anchor Bracket. Then trim the excess Flashing from around the Anchor Bracket.**

6. Move post and install Bracket using wood or concrete fasteners.
7. Install post over the Anchor Bracket and attach with four (4) #12 x 3/4" Self Drilling and Tapping Screws. As shown in the drawing.
8. Repeat steps 4 thru 7 for remaining posts.

**Note: The wood fasteners are specially treated to ASTM A153 to resist the corrosiveness of treated lumber.**



ALUMINUM-AWNING MOUNTING RAIL

DELUXE FRONT HEADER

PRE-DRILL HERE USING 1/4" DIA. DRILL

1 in MIN.

DURA-POST (INNER)

#14-13 x 3" LONG PANCAKE HEAD SELF DRILLING AND TAPPING SCREW

PRE-DRILL HERE USING 13/64" DIA. DRILL

1/2 in

(2) #12 x 3/4" SELF DRILLING AND TAPPING SCREWS

(4) #12 x 3/4" SELF DRILLING AND TAPPING SCREWS FOR JOINING THE INNER AND OUTER POSTS TOGETHER

INNER POST 24" MINIMUM INSERT DEPTH WITH A MAXIMUM OF 36" EXPOSED

24" ON CENTER SPACING (VERY IMPORTANT-MUST FASTEN AT RIB) AS SHOWN

BLACK FLASHING WITH ONE ADHESIVE SIDE.

1 1/8 in

1/2 in

1/2 in

(1) 1/4"-20 x 2-1/2" EXPANSION BOLT (FOR CONCRETE) OR

(2) #14-10 x 2-1/2" HOT DIP GALVANIZED TO ASTM A153 HEX WASHER HEAD SCREWS (FOR WOOD) FULL EMBEDMENT REQUIRED

POSTS SPACING 5' & 6' ON CENTER AS REQUIRED BY SNOW & WIND LOAD

(4) #12 x 3/4" SELF DRILLING AND TAPPING SCREWS FOR ATTACHING TO THE ANCHOR BRACKET

ANCHOR BRACKET

BLACK FLASHING

NOT REQUIRED FOR CONCRETE

DRAWN	1/28/2008	DURA-BILT PRODUCTS, INC.	
CHECKED	1/28/2008	TITLE	
LGD		ALUMINUM AWNING ROOF SUPPORT	
MATERIAL		SIZE	DWG NO
MFG		B	AAX ROOF SUPPORT
APPROVED		SCALE	1/2
		REV	